



How to Find Us

High Elms Country Park is fully accessible by car, public transport or on foot or bike!

Plan your journey by entering our postcode **BR6 7JH** when you search for us

358 bus from Bromley and Orpington; alight at Farnborough Village for a 10 minute stroll through the woods and into High Elms.

BEECHE is part of High Elms Country Park and you can find us next to The Park Café in The Wildlife Garden.

We open each weekend;

October – March 10:30am – 3:30pm

April – September 11:00am – 4:00pm

We are also open to the public on Monday, Wednesday and Friday of all school holidays.

Additional dates and times are subject to our events calendar and promotions.



BEECHE

The Landscape Group 
idverde

Bromley Environmental Education & Conservation at High Elms




**EVENTS PROGRAMME
SUMMER 2016**

www.bromleyparks.co.uk

 www.facebook.com/beecheofficial

 Twitter : www.twitter.com/TLG_Bromley

 beeche@thelandscapegroup.co.uk

 Tel: 01689 860 571



About us at BEECHE

Bromley's Environmental Education & Conservation at High Elms, a Site of Special Scientific Interest, was opened in 2008 and is a unique place where people of all ages and backgrounds can pursue their interests in Science, Nature, Art, Philosophy, Literature and Music in an awe inspiring landscape of woodlands, grasslands and ponds.

BEECHE's philosophy of learning draws from the life, work and passions of Charles Darwin, who resided and did his research in Bromley for over 40 years. As well as John Lubbock, a banker, politician, philanthropist, scientist and polymath who Darwin mentored and worked closely together. Both Darwin and Lubbock believed that the natural world can inspire us and is the basis for all we do at BEECHE.

BEECHE offers some of the following by qualified teachers and trainers:

- Education programmes and workshops for schools, support groups and adults.
- Protecting sites important for nature conservation and promoting the importance of biodiversity and the local environment through education
- Developing local policies for nature conservation, enhancing biodiversity and environmental consultancy.
- Public events including weekly parent and toddler sessions.

Volunteering

Would you like to get stuck in with conservation work, supporting environmental education and sustainable business? Up for the challenge of helping our team deliver environmental education sessions?

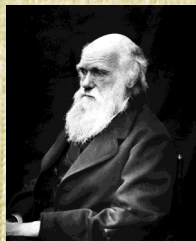
You might be finding it hard to get the job you want, even if you have the right qualifications. You can't get a job without experience, but you can't get experience without a job. Sound familiar? We have other ideas. If you are flexible in giving up your time on weekdays or weekends, then get in touch with us to see what opportunities we may be able to offer. Let's make something happen for you.

Please contact us for more information.

Room Hire

We provide a unique location that can be hired for meetings, conferences, functions and corporate events. This great venue is in the heart of High Elms Country Park and is available to book throughout the year.

Please contact us for more information.



Darwin & Lubbock Heritage Walk

(Guided walk with activities)

Join us to discover the inspirational relationship between Charles Darwin and John Lubbock, whose family owned the High Elms estate for over a century.

Find out how they met, how Darwin fostered the young Lubbock's love of nature and how they worked to develop ground breaking theories of the natural world.

Follow in their footsteps (quite literally!) through demonstrations and practical hands-on activities designed to reignite your own curiosity for nature.

Friday 12th August

10:00am-12:00pm

Friday 26th August

10:00am – 12:00pm

Adults: £5.00

Darwin Days

For children aged 8+ who are after a wildlife club with a difference!

Charles Darwin regularly explored the landscape around High Elms with his children, encouraging them to explore, question and invent their own experiments.

We offer young people the chance to follow in their footsteps.

Every Thursday

From 9:30am – 3:30pm

£20 per day

£55 for 3 days

£100 for all 6 days



Conservation & Habitat Management

(Guided Walk)

Find out how we manage the woodland and grassland habitats around High Elms for the benefit of nature. Discover how our lives have become intertwined with those of many plants and animal species and what we are doing to protect those links.

Monday 8th August

10:30am – 12:00pm

Adults: £3.00



Folklore Woodland Walk

Join us for a walk around High Elms and discover the surprising tails and beliefs surrounding many woodland plants and trees both known and loved and perhaps new to you!

Tuesday 19th July

10:30am – 12:00pm

Adults: £3.00



Introduction to Botanical Illustration

(Workshop)

Learn to see plants in a new light, develop your observation and drawing skills and begin to use watercolour to capture the intricate and delicate nature of wild flowers and woodland plants.

Monday 15th August

2:00pm – 4:00pm

Adults £15.00

Birthday Parties

Are you looking for an adventurous, outdoor woodland birthday party where your imagination really is the limit?

We can offer a bespoke, outdoor birthday party for your child featuring Nature Trails, Pond Dipping and a Mini Beast Safari.

Themes can include; enchanted forest party, secret agent, superhero, magical princess, intergalactic heroes and villains, dragon detectives and much more.

Prices (availability is limited)

Up to 15 children - £150 plus VAT

Up to 30 children - £175 plus VAT

Please contact us to book in advance or for more information.



Monday	Tuesday	Wednesday	Thursday	Friday	Saturday	Sunday
July → 18 th Family Forest Fun	19 th AM Folklore Woodland Walk PM Family Forest Fun	20 th High Elms Woodland Explorers	21 st Darwin Days	22 nd Nature Walk and Pond Dipping	23 rd	24 th
25 th	26 th	27 th	28 th	29 th	30 th	31 st
← Bush Craft Academy →						
August → 1 st The Magic of Trees walk and wand making workshop	2 nd Family Forest School course	3 rd High Elms Woodland Explorers	4 th Darwin Days	5 th Family Forest Fun	6 th	7 th
8 th Conservation and Habitat Management guided walk	9 th Family Forest School course	10 th High Elms Woodland Explorers	11 th Darwin Days	12 th Darwin and Lubbock Heritage Walk	13 th	14 th
15 th Nature Walk and Pond Dipping	16 th Family Forest School course	17 th High Elms Woodland Explorers	18 th Darwin Days	19 th Family Forest Fun	20 th	21 st
22 nd Botanical Illustration Workshop	23 rd Family Forest School course	24 th High Elms Woodland Explorers	25 th Darwin Days	26 th Darwin and Lubbock Heritage Walk	27 th	28 th
29 th BANK HOLIDAY	30 th Family Forest School course	31 st High Elms Woodland Explorers	Sept → 1 st Darwin Days	2 nd	3 rd	4 th

Full payments must be made in advance for the following courses:

Botanical Illustration, Darwin Days, Bushcraft Academy and Family Forest School.

In the rare event that there is to be an insufficient number of bookings for any activity, we reserve the right to cancel. Full refunds will be made to those who have already booked.

All staff are paediatric first aid trained and DBS checked.

Family Forest Fun

Fun and games for all the family; making, building and exploring the woodland environment together. Our Family Forest Fun sessions are designed to give you quality family time and hopefully learn new skills and develop your understanding of nature.

Suitable for ages 4+ younger siblings are welcome to come along but please note, not all paths in the woodland are suitable for buggies.

Monday 18th July 10:00am – 12:00pm
Tuesday 19th July 2:00pm – 4:00pm
Friday 5th Aug 10:00am – 12:00pm
Friday 19th Aug 10:00am – 12:00pm

Adults: £4.00*
Children: £4:00*

*Refreshments included in the price.

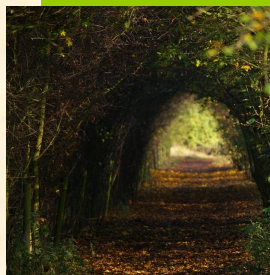
Family Forest School Course

Our Forest School course is aimed at strengthening your family's relationship with the nature. Deepening your understanding of the uses of woodland materials, developing safe use of tools, and knots & lashings in order to begin to construct shelters, furniture, and craft.

We build on existing skills and understanding week by week and so the course must be booked as a whole.



Featured Events and Activities this Summer '16



Bush Craft Academy



This course is suitable for ages 4+ due to the length of time spent outdoors and the nature of the activities we advice younger siblings do not attend.

5 week programme:
2nd August
9th August
16th August
23rd August
30th August

Full course:
Adults £70
Children £70

Nature Walk and Pond Dipping

Experience the woodland and meadows of High Elms in a new way; stop and explore along our nature walk and discover the weird and wonderful creatures dwelling in our pond!

Suitable for ages 4+ younger siblings are welcome to come along; please note, not all paths on the nature walk are suitable for buggies.

Friday 22nd July 10:00am – 12:00pm

Monday 15th Aug 2:00pm – 4:00pm

Adults: £4.00

Children: 4:00*

For children aged 8+ who are keen to develop new practical skills, deeper understanding of and respect for the natural world and, hopefully, forge new friendships! We build on existing skills and understanding over the week and so this must be booked as a whole course. All staff are paediatric first aid trained and DBS checked.

Monday 25th – Friday 29th July

9:30am – 3:30 pm

£100 per child (£95 for siblings)